

JVC[®]
PROFESSIONAL

13" COLOR VIDEO MONITOR

BM-H1300SU

19" COLOR VIDEO MONITOR

BM-H1900SU

High-Resolution Images with Outstanding Color Stability, and Easy Menu-Driven Operation



- SMPTE-C Phosphors
- 750 Lines of Horizontal Resolution
- Multi-Format Compatibility
- Beam Current Feedback System for Outstanding Color Stability and Reproduction
- On-Screen Menu Operation
- Easy Menu-Driven Adjustment Coupled with Front Knob Controls
- Remote Control Capability with ID System

U.S. Standard SMPTE-C Phosphor High-Resolution Images

The newly developed high performance BM-H series of monitors provides an outstanding level of picture quality. These monitors are designed for high versatility and fit a wide range of video applications.

Featuring SMPTE-C phosphors and fine pitch in-line gun CRT's, the BM-H monitors deliver crisp images with 750 lines of horizontal resolution. The CPU controlled Beam Current Feedback circuit assures stable color temperature at any operating condition for perfect color reproduction. A user friendly Menu allows for fast and easy on-screen parameter setup and adjustments. A lockout function prevents unwanted or accidental changes. It all adds up to an innovative package that sets new standards of performance for professional monitors at an affordable price.

Horizontal Resolution

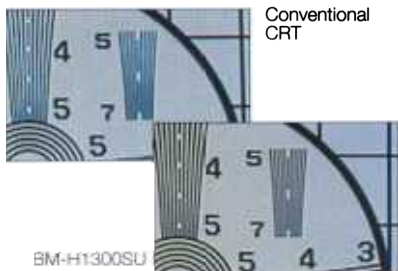
750
Lines

Stability

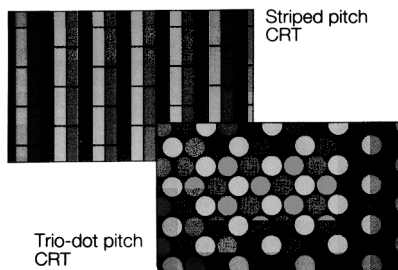
■ High resolution with SMPTE-C phosphor

Featuring an in-line gun CRT (SMPTE-C Phosphor) with a fine trio-dot pitch of 0.28mm for the BM-H1300SU and 0.40mm for the BM-H1900SU, the monitors deliver an exceptional horizontal resolution of 750 lines.

■ Horizontal Resolution Test Screen



■ Conceptual Drawing of Trio-Dot Pitch

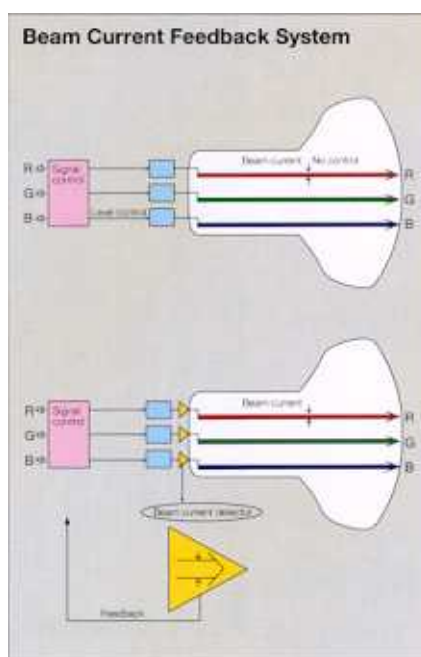


■ Stable picture and color balance

Sophisticated circuitry managed by an advanced CPU ensures a high level of consistency and stability in the key areas of color reproduction, picture reproduction and DC restoration. The results are excellent pictures with faithful color reproduction and outstanding color stability. With one-time digital parameter setting via the on-screen menu, there is no need for any further external adjustments. The monitor's built-in CPU ensures that the parameters for both picture and color stability are maintained.

■ Beam current feedback system compensates for CRT ageing

Because the inherent drift of a CRT has always plagued monitor stability, JVC has developed a new beam current feedback system which continuously monitors the ageing of each gun and feeds back compensation. The result is long-term color stability never before achieved in a monitor of this class. This combination of features makes it ideal for a wide range of professional applications requiring sharp pictures and total reliability.





BM-H1300SU

BM-H1900SU

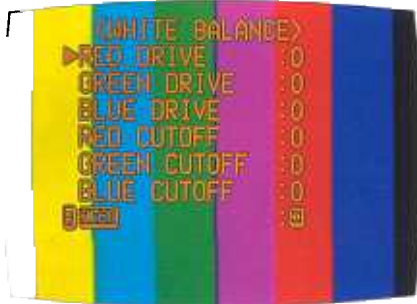
Easy to operate

■ On-screen menu-driven operation

Aspect ratio select, color temperature select, white balance adjustment, etc. can be operated easily via the on-screen menu. The monitor can even be set up to compensate for the setup difference between RGB and composite video signals, eliminating the brightness shift when switching between these signals. Once set, the parameters are stored in the monitor's memory which uses the data to ensure the constant reproduction of stable pictures.

■ Memory recall

Using the on-screen menu and the controls located on the front panel, it is easy to make adjustments to achieve the required picture characteristics. Picture characteristics whose control settings have been stored in memory can be instantly recalled.



■ Control lock

Control lock is a tamper-proof function which disables all of the front panel controls except audio volume adjustment, preventing accidental changes during critical production shoots.

■ Aspect ratio switchable 16:9/4:3

The aspect ratio can be switched via the menu from 4:3 to 16:9 and vice versa.

Other features

■ Multi-system compatibility

The exceptionally flexible BM-H1300SU and BM-H1900SU accept a wide range of input signals.

Video inputs: Composite A/B, Y/C, Component (Y, R-Y, B-Y) and RGB analog

Audio inputs: RCA x 3

Video signals: PAL, NTSC 3.58 and NTSC 4.43 (Automatic detection)

■ Universal power

100 to 240V AC, 50/60Hz, auto sensing.

■ Selectable color temperatures

Color temperatures (6,500°K/9,300°K) can be selected to complement viewing preferences. Customizing of color temperature is possible using menu setup.

■ Remote control unit RM-C550W (optional)

With a single wireless remote control adopting an ID system, users can operate, control and adjust several monitors, either individually or collectively.

- Picture adjustment (similar on-screen menu plus front panel picture controls)

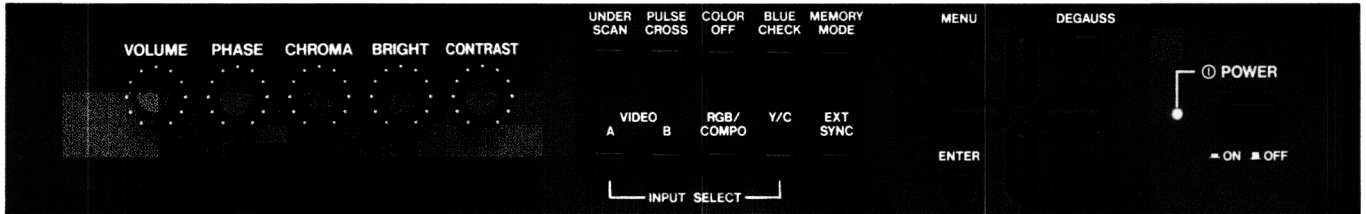
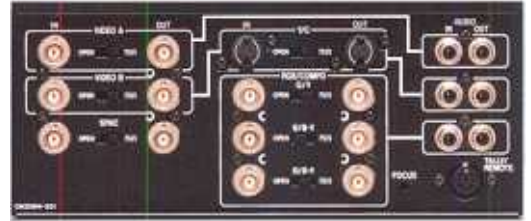
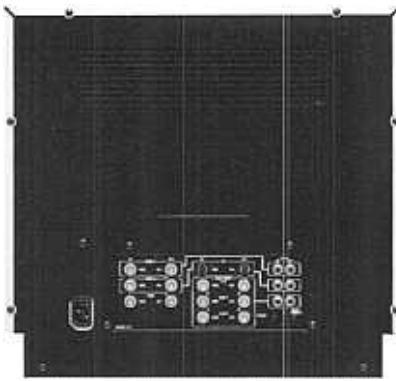
- Degauss

- Volume

RM-C550W
(optional)



- Wired remote input is provided and can be configured through the menu.



Specifications

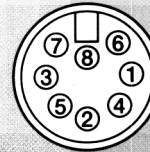
	BM-H1300SU/BM-H1900SU	
Type	Color video monitor	
Color system	NTSC 3.58/NTSC 4.43/PAL	
CRT	BM-H1300SU	BM-H1900SU
	13" (visual size diagonally measured), in-line gun, trio-dot pitch of 0.28mm, SMPTE-C phosphor	19" (visual size diagonally measured), in-line gun, trio-dot pitch of 0.40mm, SMPTE-C phosphor
Scanning frequency	H: 15.75kHz (NTSC)/15.625kHz (PAL) V: 60/50Hz	
Horizontal resolution	More than 750 TV lines	
Power requirement	120V AC, 60Hz (UL approved). Will operate 100 to 240V AC, 60/50Hz with auto sensing.	
Power consumption	0.9A	
Color temperature	6500°K/9300°K (selectable)	
Video input connectors		
Composite Video A/B	1.0 V(p-p), 75 ohms, negative sync, termination switch provided, BNC × 4 (2 for bridged output)	
Y/C	Y: 1.0 V(p-p), 75 ohms, negative sync C: 0.286 V(p-p), 75 ohms (NTSC) 0.3 V(p-p), 75 ohms (PAL) termination switch provided, DIN 4-pin × 2 (1 for bridged output)	
RGB	R: 0.7 V(p-p), 75 ohms G: 0.7 V(p-p), 75 ohms B: 0.7 V(p-p), 75 ohms G on sync: 1.0 V(p-p), 75 ohms, negative sync termination switch provided, BNC × 6 (3 for bridged output)	
Component	Y: 1.0 V(p-p), 75 ohms, negative sync R-Y: 0.7 V(p-p), 75 ohms B-Y: 0.7 V(p-p), 75 ohms termination switch provided, BNC × 6 (3 for bridged output/ common to RGB connectors)	
External sync	Composite sync, 0.2 — 4.0V(p-p)	
Audio connectors	RCA × 6 for input A, B and C channels, bridged outputs	
Audio speaker	9cm × 5cm (oval), 1.6W/output	
Tally/Remote	DIN 8-pin	
Weight	BM-H1300SU	BM-H1900SU
	35.7 lbs. (16.2 kg)	66.0 lbs. (30.0 kg)
Option	Remote controller (RM-C550W)	

Y/C connectors



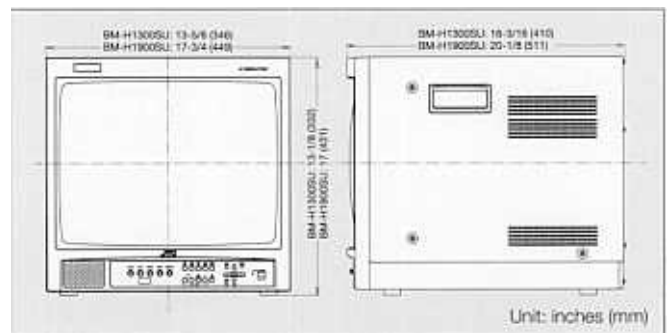
Pin No.	Signal
1	GND
2	GND
3	Y
4	C

Tally/Remote connectors



Pin No.	Signal
1	Tally
2	Input Select
3	Control-1
4	Control-2
5	Remote Enable
6	—
7	—
8	—

Dimensions



Design and specifications subject to change without notice.

JVC[®] DISTRIBUTED BY

JVC PROFESSIONAL PRODUCTS COMPANY
DIVISION OF US JVC CORP.
41 Slater Drive, Elmwood Park, N.J. 07407
TEL: (201) 794-3900, 1-800-528-5308
FAX: (201) 523-2077

JVC CANADA INC.
21 Finchdene Square, Scarborough, Ontario M1X 1A7
TEL: (416) 293-1311 FAX: (416) 293-8208

Printed in Japan
ICN-0162