

Ikegami

High performance, top-of-the-line EFP camera

HL-791



HL-791 High performance, top-of-the-line EFP camera



The newly developed HL-791 incorporates Ikegami's latest concepts for EFP cameras for studio and field production use. It has been developed with full utilization of Ikegami's vast resources in state-of-the-art technology accumulated in the search for excellence in EFP cameras.

The HL-791 features the most advanced functions and exceptional performance. It offers unlimited potential for applications, ranging from extension systems with multi-core/triaxial cables to ENG systems combined with video cassette recorders.

The HL-791 opens up new frontiers in EFP operation.

Fully self-contained, the HL-791 incorporates self-diagnosis with an auto setup function to ensure exceptional ease of use and operational flexibility. What's more, the HL-791 boasts a host of functions that emphasize ease of operation together with superior image quality.

The HL-791 is a color production camera that is sure to set the stage for the new EFP camera era.

HL-791 High performance, top-of-the-line EFP camera

■ Features

● Auto Setup Function

The HL-791 provides easy but accurate initial setup for camera operation with a single camera head unit. Its self-diagnosis function facilitates quick correction of judgement errors.

The fully self-contained HL-791 has a camera head with VTR and Remote connectors.

Auto setup items

- | | |
|--------------------------|-------------------------------|
| • Registration: | • Level: |
| R/B H. Cent, R/B V. Cent | R/G/B Gamma, R/G/B Flare |
| R/B Rotation, R/B Skew | Master Ped, R/B Ped, R/B Gain |
| R/B H. Lin, R/B V. Lin | R/G/B Black set |
| R/B Width, R/B Height | |



● A Host of Viewfinders

With the HL-791, an optimal system can be configured to suit each operational use. An optional 1.5", 3", 4.5", or 6" B/W viewfinder can be attached to the camera, and since the DTL signal is mixed as an input video signal dedicated to the viewfinder, enhanced viewfinder resolution is ensured.

With the 1.5" viewfinder, the separate adjustments for diopter and eyepiece position help improve ease of operation, and its rotation mechanism provides a smooth transfer.

● Indicators in the Viewfinder

The Viewfinder has internal box marker and cross marker indicators so that the setting positions can be adjusted. The LED, zebra pattern, and characters indicate the camera status, providing reliable support to the cameraman.

- | | |
|----------------------|----------------------|
| • White Balance Mode | • White Balance Area |
| • VCR Audio Level | • Battery Warning |
| • Video Level | • Filter Position |
| • AWB, ABB, | • VCR Tape Length |
| Auto Setup OK/NG | • Gain Up |
| • Tally | • Lens Extender |
| • VCR Warning | |

● Gain Positions

With the new addition of -3 dB, the HL-791 has four gain up positions: -3 dB, 0 dB, $+6$ dB, and $+12$ dB. The -3 dB position is especially useful when shooting outdoors in fine weather.

● Three-mode A W B

Since auto white balance memory for two setup values A and B, and a preset value at a color temperature of 3000°K is incorporated, white balance can be switched in a split second, depending on the shooting condition.

● Iris waiting/Lens closing

The HL-791 is provided with an iris waiting/lens close function to protect the pickup tube from sticking. When powered on, the iris remains closed until beam current is delivered, and is automatically closed when powered off.

● Incorporation of aperture correction circuits for separate R, G, and B channels ensures a still further improvement in resolution.

● Effect filters (optional)

As well as the usual ND and CC filter disks, filter disks for special effects such as cross, sunny-cross, soften, and through can be attached to the HL-791 to yield versatile visual effects.

● The independent PGM channel on the intercom enables the cameraman to monitor the audio channel with stereo sound. The head-set specifically developed for this camera delivers high-fidelity sound.

● Newly Developed MIC AMP

Since the low-frequency components have been improved substantially, reduction of S/N ratio due to low-frequency response is eliminated, enabling sound to be recorded with greater presence than ever.

● With a video signal-to-noise ratio (S/N) of 59 dB for PAL-B and 61 dB for NTSC, and a horizontal resolution of over 650 lines, the HL-791, along with the HL-79E, stand atop Ikegami's HL series of cameras.

● Dynamic DTL correction and dynamic beam focus work together to yield enhanced resolution in the corners of the screen and reproduction of crisp images. A uniform image quality is maintained from the center to the corners of the screen.

● Full White Shading

Incorporation of the full white shading correction circuit enables white shading for separate R, G, and B to be corrected independently. Moreover, since white shading correction is made while the lens extender is in use, fine image quality with no color distortion can be obtained.

● The chroma aperture correction function compensates for loss of image contours in the blue, red, and magenta color regions, which traditionally have not been covered by conventional DTL (out of green). Therefore, a sharp picture can be reproduced even under special lighting conditions.

● Highlight Compression and Knee Aperture Correction ensure correct dynamic ranges at all times for incoming light. Even high-contrast images can be reproduced without compromise in gradation. With these circuits operative, highlight areas of the image are corrected in the profile, with an improvement in resolution.

● Soft DTL

The HL-791 incorporates the Soft DTL. With the conventional DTL, some objects produce an objectionable glare in the image. The Soft DTL reduces such glare, thus realizing reproduction of color images with natural rendition.

● Time Code Lock Function and Genlock Circuitry

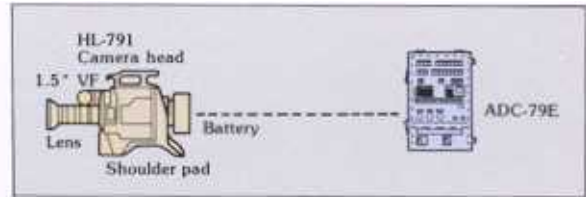
The HL-791 incorporates a time code lock function and genlock circuitry to facilitate system operation with more than one camera.



■ System Applications

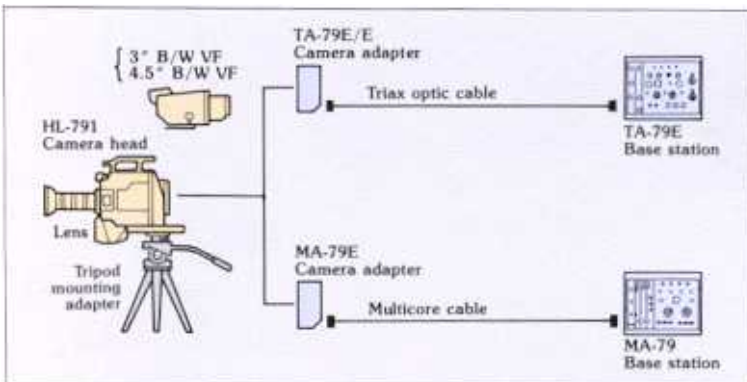
■ *Self-Contained Operation*

The HL-791 camera, with auto setup, meets the exacting demands of EFP with flexibility and reliability.



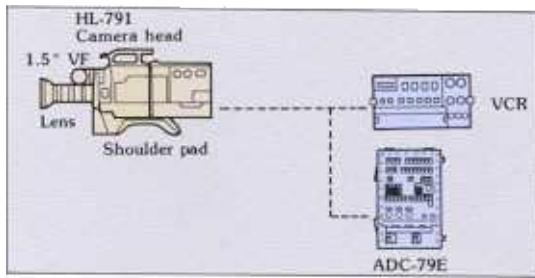
■ *Cable Extension Operation with Triax/Multicore*

A variety of cable adapters enable the HL-791 to satisfy all studio and field requirements for production flexibly.



■ On-board VCR Operation

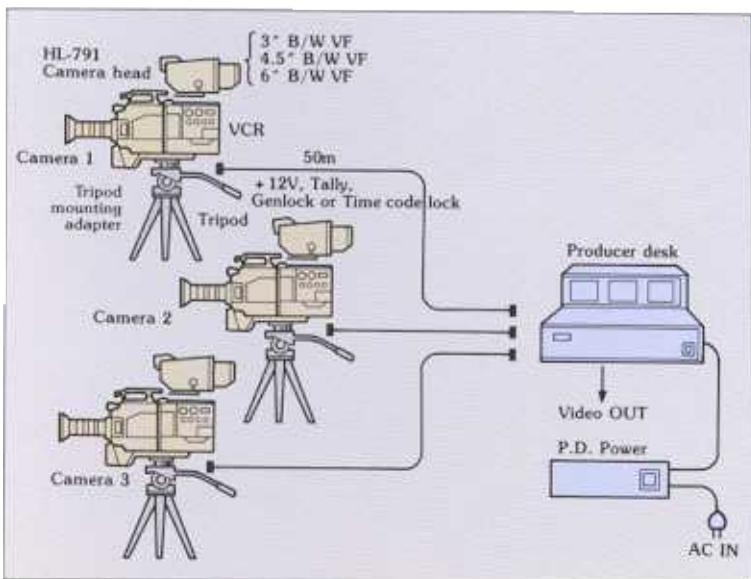
The HL-791 can be used in conjunction with a VCR for ENG operations. It can be operated easily in combination with various 1/2" VCRs for broadcasting use, and when another separate VCR is added through the VCR connector, it can be operated with two VCRs at the same time.



■ Multi-camera Operation

The multi-camera operation system represents a new system configuration that can be realized only by the HL-791. It offers the state-of-the-art features and performance that will be demanded in tomorrow's studio and field production applications.

A producer's desk (special order) can accommodate three 5" B/W monitors, so pictures sent from separate cameras can be selected and switched for reproduction on the external monitor. Furthermore, all the video signals can be delivered to external components such as VCRs. This system also receives intercom, genlock, and time code lock signals and provides a +12V power source for the cameras. With the multi-camera operation system, the producer desk functions as a control panel that commands the overall system operation.





MA-79 Base station & MA-79E camera adapter



TA-79E Base station & TA-79E camera adapter



4.5" B/W Viewfinder



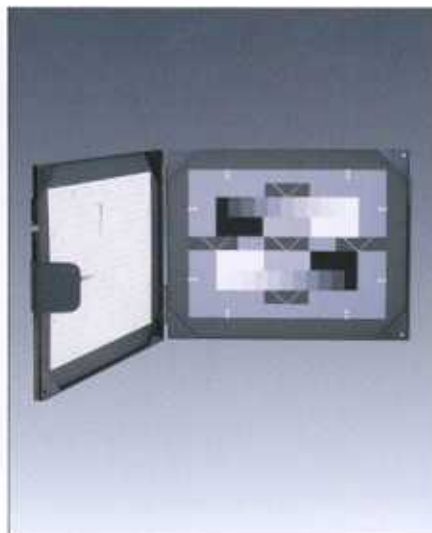
AC Power pack



CHG-21C Battery charger
& BAT-12C Battery pack



Camera adapter



CPU-3 Test chart



Tripod